

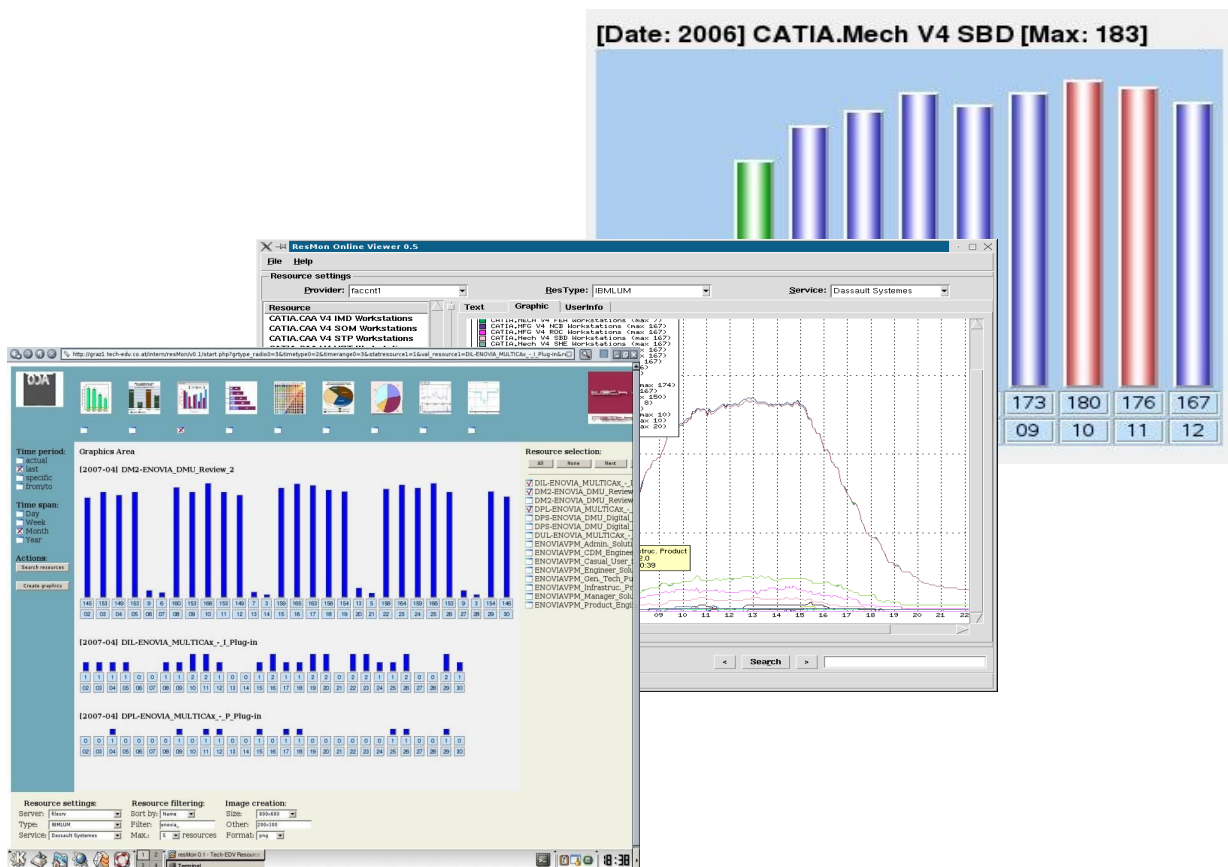
With the

Tech-EDV Resource Monitoring Tool

you survey the

- ◆ utilization
- ◆ usage and
- ◆ trends

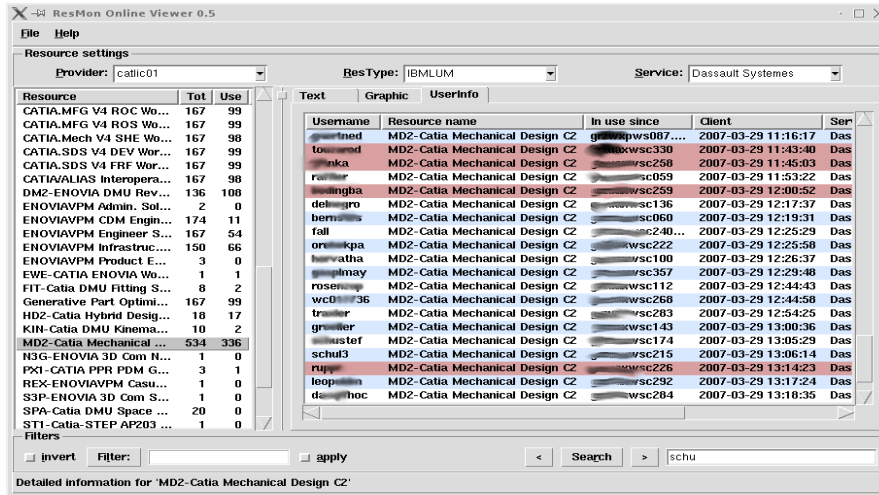
of your licenses, fileserver- and other resources.



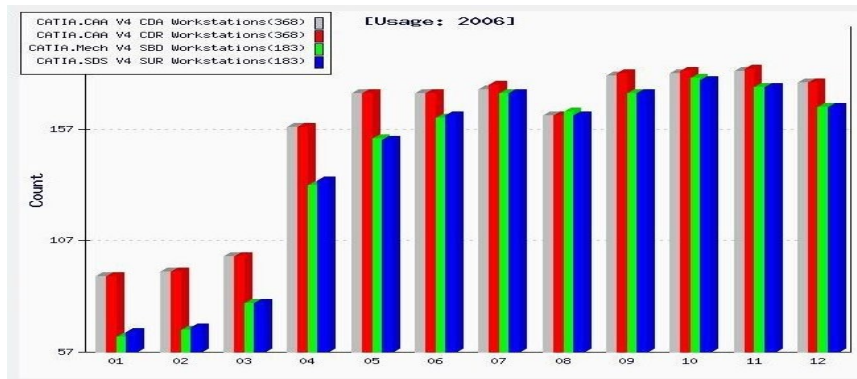
The goal to use the IT resources by economic criterions is noncontentious. Much more difficult is the aquisition of all necessary data. Using the

Tech-EDV Resource Monitoring Tool

you select specific licenses from the list of all available resources



and you see immediately the present utilization.

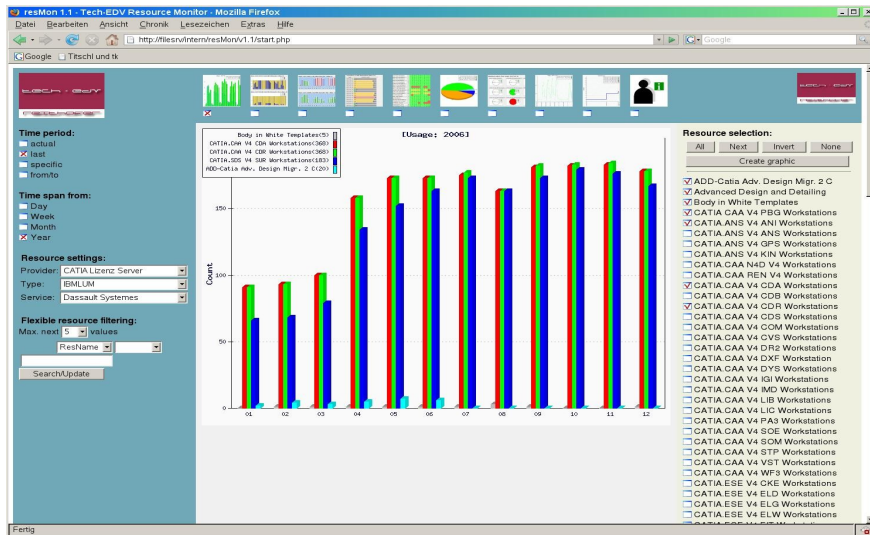


Unused resources become tracked down, costs will be minimized.



From the database of the Tech-EDV Resource Monitoring Tool you are able to extract the usage of specific resources of any period of time and to visualize this in your webbrowser.

Hence you have your familiar working environment and the



results may be transferred directly to your office applications like Powerpoint, etc.



Monitoring mechanisms warn you automatically.

Begin: 2006	max	01	02	03	04	05	06	07	08	09	10	11	12
Body in White Templates	5	0	1	1	1	1	1	1	3	1	0	0	1
CATIA.ANS V4 KIN Workstations	10	6	5	6	5	9	6	8	5	7	8	6	5
CATIA.CAA N4D V4 Workstations	50	8	10	11	27	27	27	28	23	25	25	23	18
CATIA.CAA V4 CDA Workstations	368	91	93	100	158	173	173	175	163	181	182	183	178
CATIA.CAA V4 CDB Workstations	1	1	1	1	1	1	1	1	1	1	1	1	0
CATIA.CAA V4 CDB Workstations	368	91	93	100	158	173	173	177	163	182	183	184	178
CATIA.CAA V4 CDB Workstations	1	0	1	1	1	1	1	1	1	1	1	1	1
CATIA.CAA V4 IGI Workstations	2	1	2	1	2	2	2	2	2	1	2	2	2
CATIA.CAA V4 IMD Workstations	4	1	3	2	2	2	1	1	3	1	1	1	1
CATIA.CAA V4 SOM Workstations	1	1	1	1	1	1	1	1	1	1	1	1	1
CATIA.ESE V4 ELD Workstations	2	0	0	1	1	1	1	1	2	2	2	2	1
CATIA.ESE V4 ELG Workstations	2	0	0	1	1	0	1	0	2	1	2	2	1
CATIA.ESE V4 ELW Workstations	2	0	0	1	1	1	2	1	2	1	2	2	1
CATIA.ESE V4 FIT Workstations	8	5	5	8	8	8	7	8	7	8	6	6	6
CATIA.ESE V4 SPA Workstations	50	9	9	14	13	16	16	14	14	14	14	12	9
CATIA.ESE V4 TUS Workstations	2	1	2	2	2	2	2	2	2	2	2	1	2
CATIA.MECH V4 FEA Workstations	7	0	0	0	0	0	1	0	0	0	0	0	0
CATIA.MFG V4 NCB Workstations	1	1	1	1	1	1	1	1	1	1	1	1	1
CATIA.MFG V4 ROC Workstations	1	0	0	0	0	0	1	0	0	0	0	0	0
CATIA.Mech V4 SBD Workstations	183	64	67	79	132	153	162	173	165	173	180	176	167
CATIA.Mech V4 SHE Workstations	2	1	1	1	1	1	1	2	2	2	2	2	2

Efforts for you:

Nevertheless the type and complexity of IT resources differ in various user environments.

You may request only representations and utilization modules which you really need and these modules will be installed and implemented on-site.

The software is designed modularly, therefore we are able to put in practice all detailed user specific requirements and you pay only what you need.

Do you want to see more?

Visit our website at

www.tech-edv.co.at

**Tech-EDV Christine Reithofer
Peierlhang 31 b, 8042 GRAZ, AUSTRIA
Tel: +43-316-40 57 07, Fax: +43-316-40 57 07 15
E-Mail: office-graz@tech-edv.co.at**